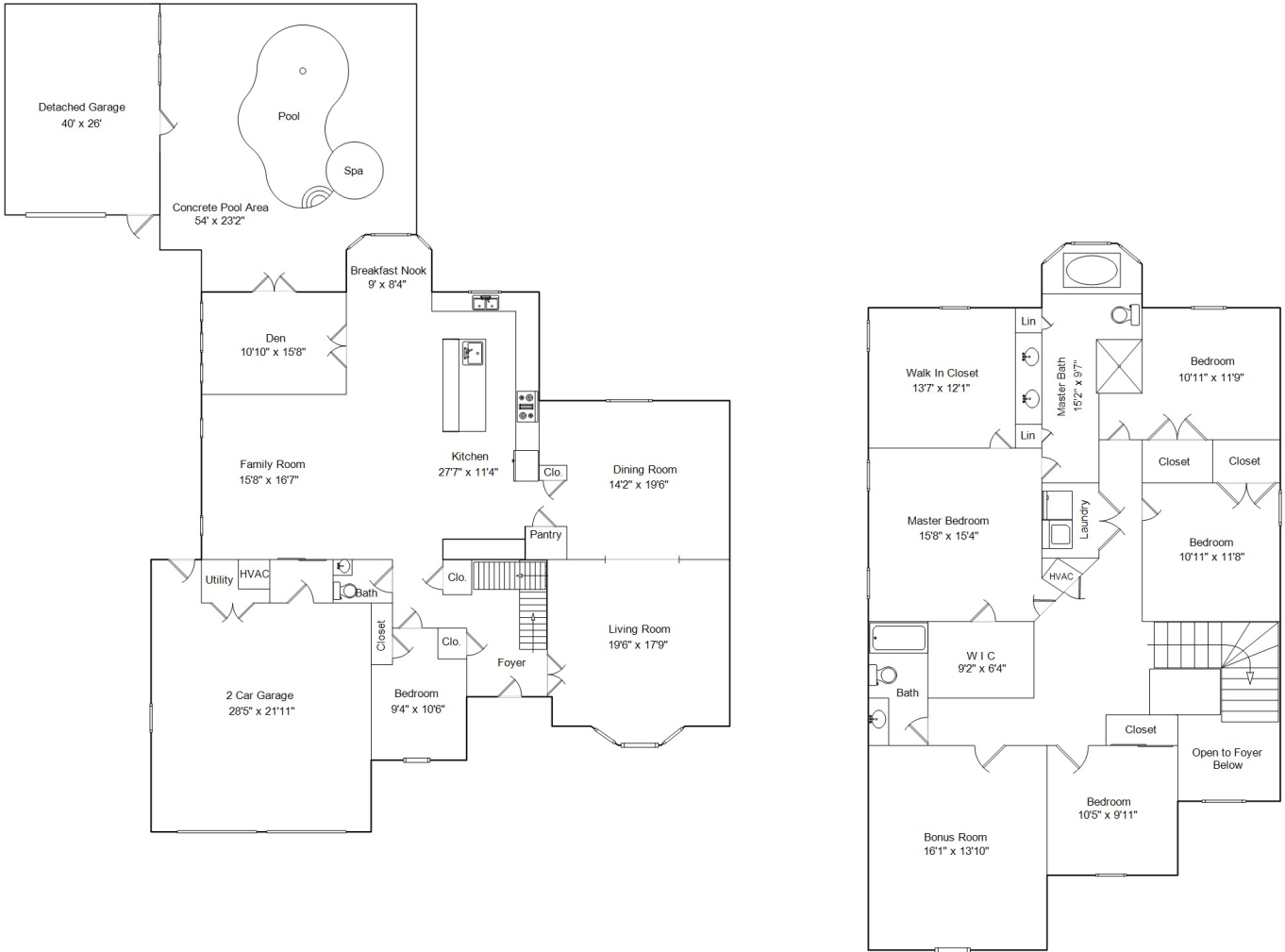


15630 Idalia Dr.
Alva, FL 33920



Area Sizes

Main Level:	2,363 sq ft
Upper Level:	2,020 sq ft
Detached Garage:	1,040 sq ft
Concrete Pool Area:	1,209 sq ft
2 Car Garage:	586 sq ft
Total Finished:	7,218 sq ft

